

SHERATON Four Points Inn

Plainview, New York

Interstate 495, The Long Island Expressway, @ Exit 40

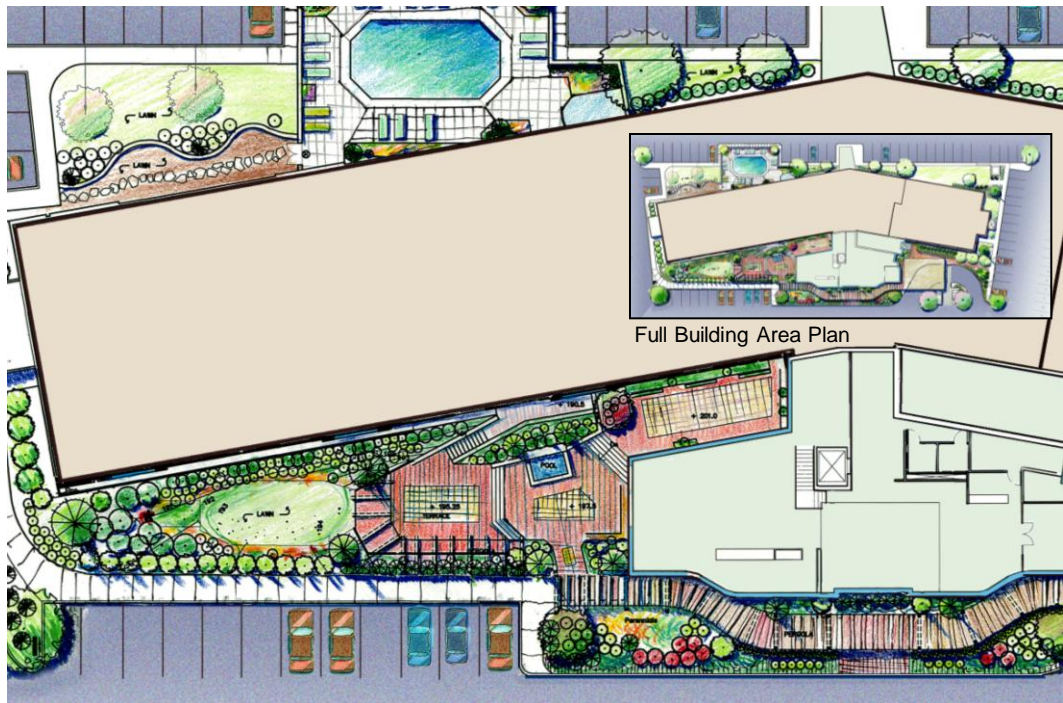
Through design of a new entrance lobby and tower, Urbitran architects upgraded this 103-room hotel facility located just a hundred feet from the Long Island Expressway.



A challenge for Urbitran landscape architects was to design hotel front plantings in a manner that would accentuate the architecture and announce the building, while at the same time buffer for hotel guests the constant noise and high visibility of the nearby thoroughfare.

Landscape Spaces

Within a narrow landscape pad area, the design team accommodated a drop-off area, an outdoor swimming pool, and a series of outdoor terraces. Through plantings and grading, landscape architects screened, raised, or sunk these subspaces so that within each perception of the dominant parking area would be minimized.*



The landscape team designed the outdoor terraces to serve the needs of facility conference center and banquet hall functions. The terraces feature a central cascading water wall, whose purpose, in addition to visual quality and welcome appeal, is highway noise mitigation.



*To have sufficient area for required parking spaces, the large parking area could not be reduced from its pre-existing extent.

Entry View of Outdoor Terraces