

MTA MNR Southeast Station Expansion

The Town of Southeast, New York

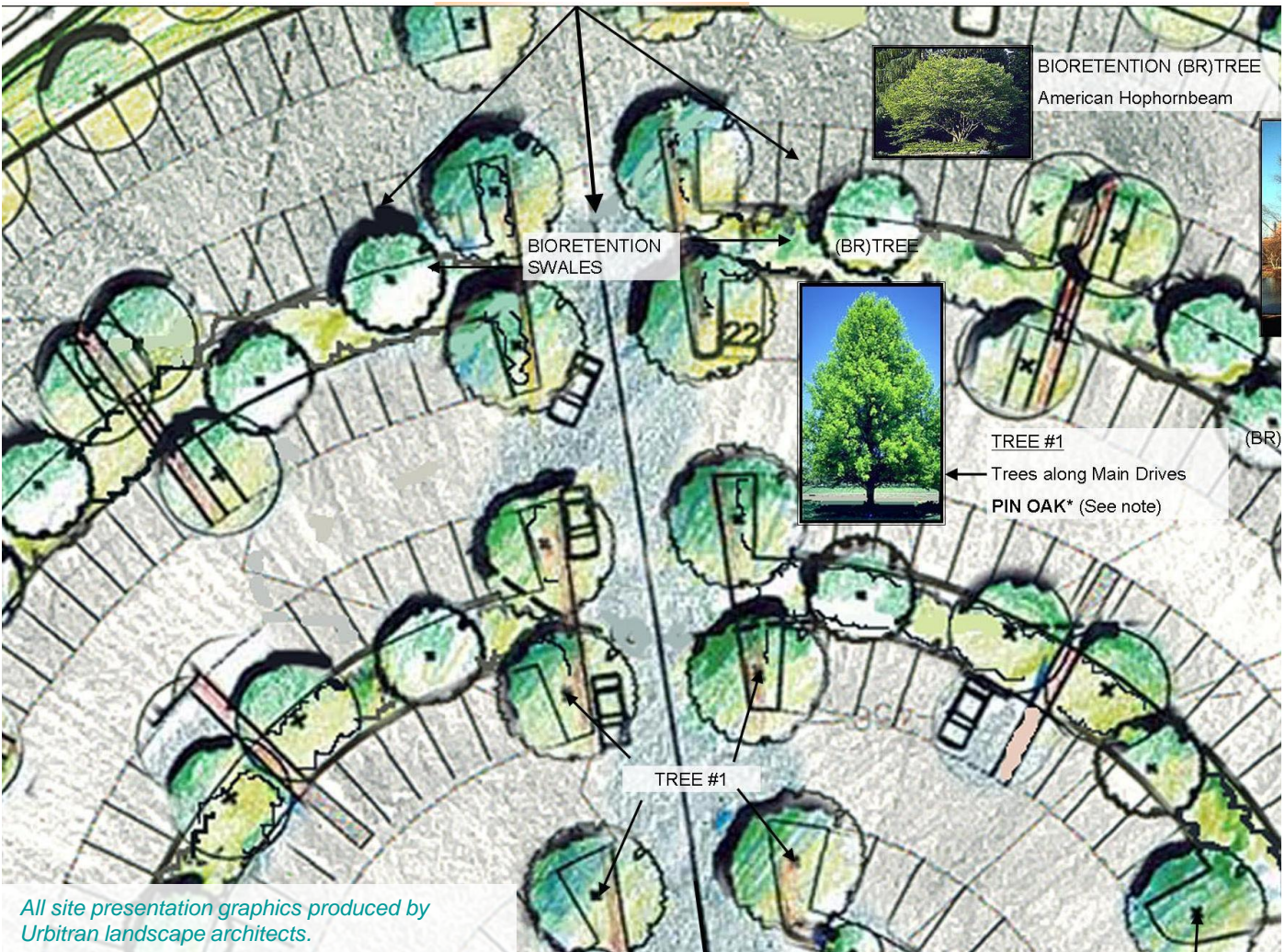


A major program element for this project is a 450-car parking expansion area for commuters. Woven into it is a transportation intermodal plaza. The site rests atop a sloped drainage head surrounded by streamcourses and Category I wetlands, all of which impact the New York City water supply.

The site planning team is in the process of developing a Stormwater Pollution Prevention Plan in which all retention and detention measures are above ground. The bioretention swales seen in the enlarged plan below will handle stormwater filtration up to a 5-year storm event, a strategy that will reduce substantially the number and cost of catch basins and related collection pipes.

The project landscape team has also developed a plant list consisting of both of woody and herbaceous plants that are native to the Northeast and can withstand both periodic flooding and drought.

Both of the above strategies are fundamental in LEED Certified projects that have significant site development components. These strategies not only benefit the environment but reduce long-term operating costs significantly.



All site presentation graphics produced by Urbitran landscape architects.