

Interstate 95 Expressway Planting

The Bruckner Expressway, The Bronx, New York City

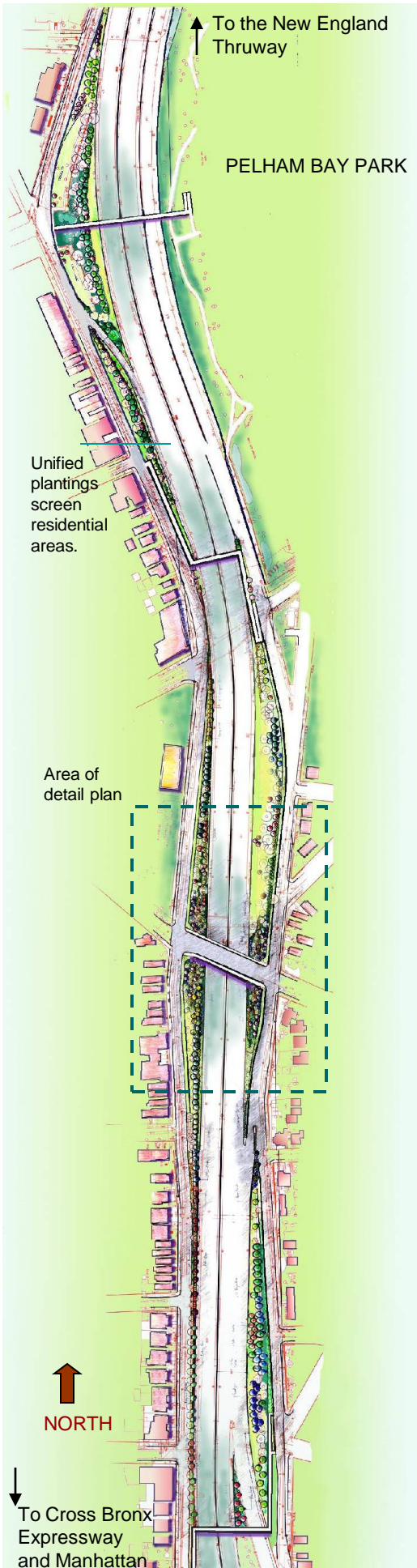
In conjunction with our civil group who oversaw the road widening efforts, Urbitran landscape architects created the landscape plan for this one mile stretch of the I-95 thoroughfare, which is located prominently at the entry into New York City from Westchester County and New England.

The highway runs through a predominantly residential corridor. Hence, a foremost concern was screening for the homes and apartment buildings.

As with all roadway landscape projects, the Urbitran goal here was to create a unified, identifiable corridor for motorists, pedestrians and residents alike.

Specific tasks for this project included:

- Analyzed existing trees to minimize construction impact and compliment existing tree masses.
- To address long-term maintenance concerns, developed plan in collaboration and direct purview of the New York City DOT Arterial maintenance division.



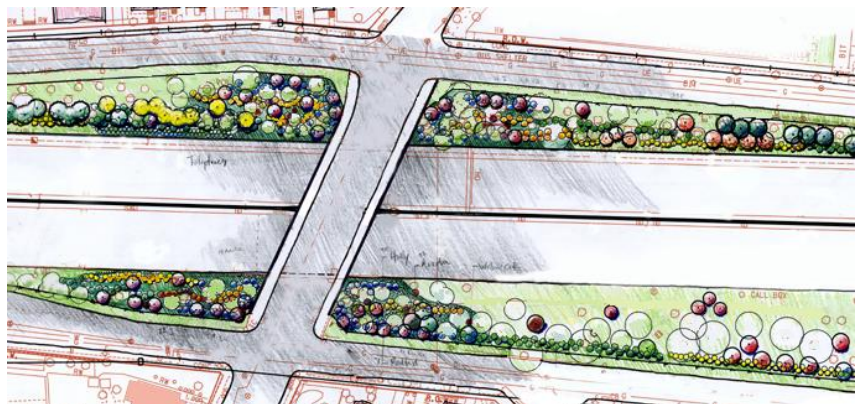
Unified plantings screen residential areas.

Area of detail plan

NORTH

To Cross Bronx Expressway and Manhattan

Detail BRIDGE LANDSCAPE



To highlight bridge and pedestrian crossings, team concentrates more landscape plantings in these zones.